

[Answer] Should I fold my laptop screen?

Laptops have become a common device in our lives. So should we fold the laptop screen when using it?

Laptops have become a popular device in our lives. Laptops appear in work, entertainment or study. However, there are some habits that cause very serious effects on components, especially laptop screens. So **should you fold the laptop screen** while using it? This question will be answered by TipsMake through the following article, let's follow along.

Should I fold my laptop screen?

The habit of folding the laptop screen is not too strange to many people. After use, you often accidentally fold the laptop screen without turning it off. Or when your computer is off for too long, users often fold the screen even though the computer is not completely off. However, this habit brings many harmful effects to the computer that you do not know.



Laptop screens are parts that are easily damaged and faulty due to many external factors such as temperature, dust, etc. The screen and many other components have a reduced lifespan and are prone to errors. Other parts such as the motherboard, HDD, etc. are still supplied with power to retain information and are ready to restart as soon as the machine is turned on. Therefore, if you want to take your laptop somewhere during this time, the device will be more easily damaged. It is best for users to turn off the laptop completely if they want to fold the computer screen and take it somewhere.

During use, you should not fold the laptop screen because at this time the programs are still running and the machine has not been switched to Sleep mode. Even though the screen is temporarily off, the hidden components of **the laptop** are still operating at high capacity, thereby causing negative effects if impacted or shaken when moving.

How to set Shutdown mode when folding the screen

After knowing whether to fold the laptop screen or not, you should learn how to set this mode to help you save time when turning off the laptop. You just need to fold the screen to turn off the machine.

Details on how to set up whether to fold the laptop screen are as follows:

In windows 7 and 8 operating systems

Step 1: Right-click on the battery icon in the Taskbar. Then select Power Options.

Step 2: In the Power Options window, click Choose what closing the lid does.

Step 3: 3 main modes will appear on the screen including:

Do nothing: Do nothing, when suddenly closing the laptop screen it still works normally.

Hibernate: The machine is put into Hibernate mode and the machine goes into sleep state.

Shutdown: Shut down

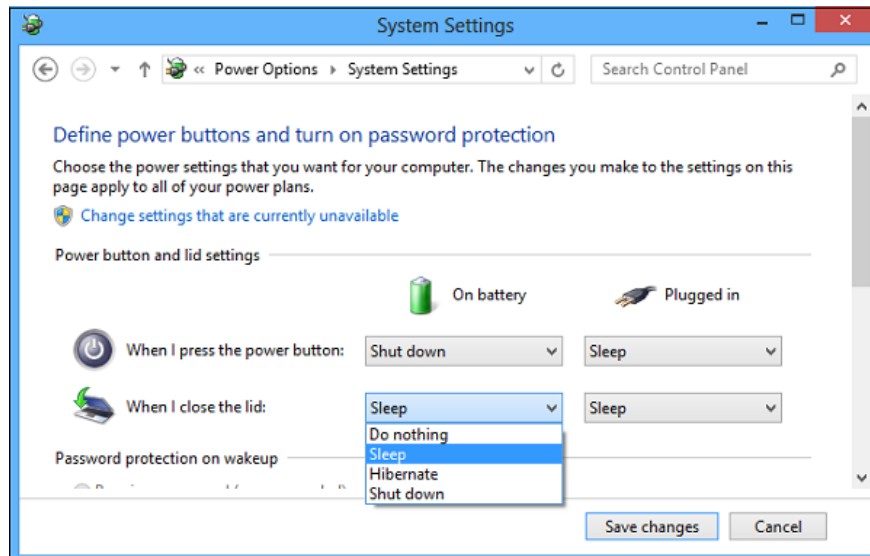
Then, click on Shutdown mode.

On Windows 10 operating system

Step 1: Click on Control Panel after pressing the Windows + X key combination. Or you can go to Windows to search for the keyword Panel.

Step 2: Then continue to click on Power Options.

Step 3: In the new interface that opens next, click on the Choose what closing the lid does setting.

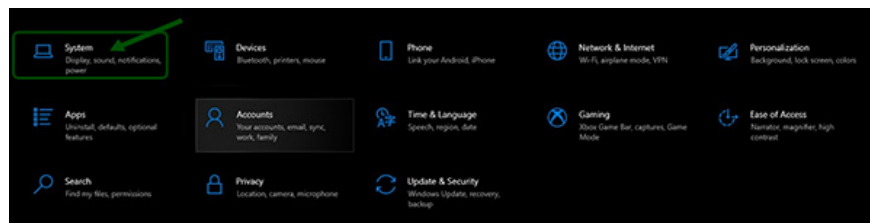


Step 4 : In the System Settings interface that opens, scroll down to the When I close the lid section and select Shutdowns in the On battery and plugged category. Then, click Save Changes below to save the changes you have made.

How to set Sleep mode when folding the screen

To help your laptop stay on when you fold the screen down, you need to set up sleep mode when folding the screen as follows:

Step 1: In Settings, select System.



Step 2: Click on Power & Sleep.

Select Additional Power Settings.

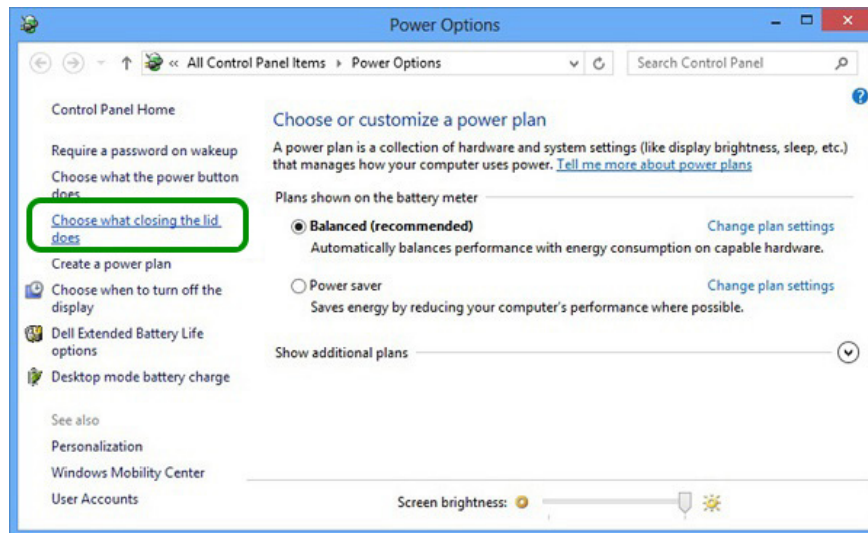
Step 3: Click the Choose what closing the lid does tab.

Step 4: In When I close the lid > select Do nothing with 2 modes of using battery and charging > select Save to save the changes.

After completing the above installation steps, when you fold the laptop **screen** , the device will still maintain its operating state on the operating system.

How to turn off Sleep mode when folding the screen

Users can also turn off Sleep mode by setting the device to turn off when the laptop screen is closed. The detailed steps to perform these steps are as follows:



Step 1: On the Desktop, click Start or press the Windows key > select Control Panel.

Step 2: Click Hardware and Sound in Control Panel.

Step 3: Open Power Options > Control Panel Home > Choose what closing the lid does.

Step 4: Check if the When I close the lid section is in Sleep mode or not. If so, it means that when you close the computer screen, the computer only goes into sleep mode and does not turn off and vice versa.

Step 5: Select Sleep and then change to Shutdown to turn off the Sleep feature when closing the screen, replacing it with the feature to immediately turn off the laptop.

Step 6: Similar to On battery and Plugged in to set the shutdown mode when folding the screen, both when using battery or plugged in to charge.

With the information that **TipsMake** has just shared through the above article, hopefully it has helped you answer the question of whether or not to fold the laptop screen while in use and know how to preserve the laptop screen more effectively. If you have any questions or need support, please contact directly via hotline 1900 1903 for immediate answers.

You finished reading the article "[Answer] Should I fold my laptop screen?" edited by the [TipsMake](#) team. We hope this article has provided you with many useful tech tips and tricks. You can search for similar articles on tips and guides. Thank you for reading and for following us regularly.